

# Eutrophication and CAP - example Baltic Sea

Lennart Gladh  
Gdansk Sep 09





# Challenge!!





# Baltic Sea shared by 9 countries



Most polluted sea in the world.

Catchment 4,5 times bigger than the sea with 90 million people.





## Natural facts

- Almost enclosed.
- Shallow(mean depth 53 m).
- Large catchment.
- Exchange of waters -30 years.
- Brackish
- Stratified
- Young(10000 years)
- Unique but limited biodiversity





# Political scene

- 8 Eu states and Russia.
- Belarus, Ukraine, Norway, Czech republic in the catchment.
- Different priorities and awareness
- Helcom –oldest regional marine convention





# What is the problem?

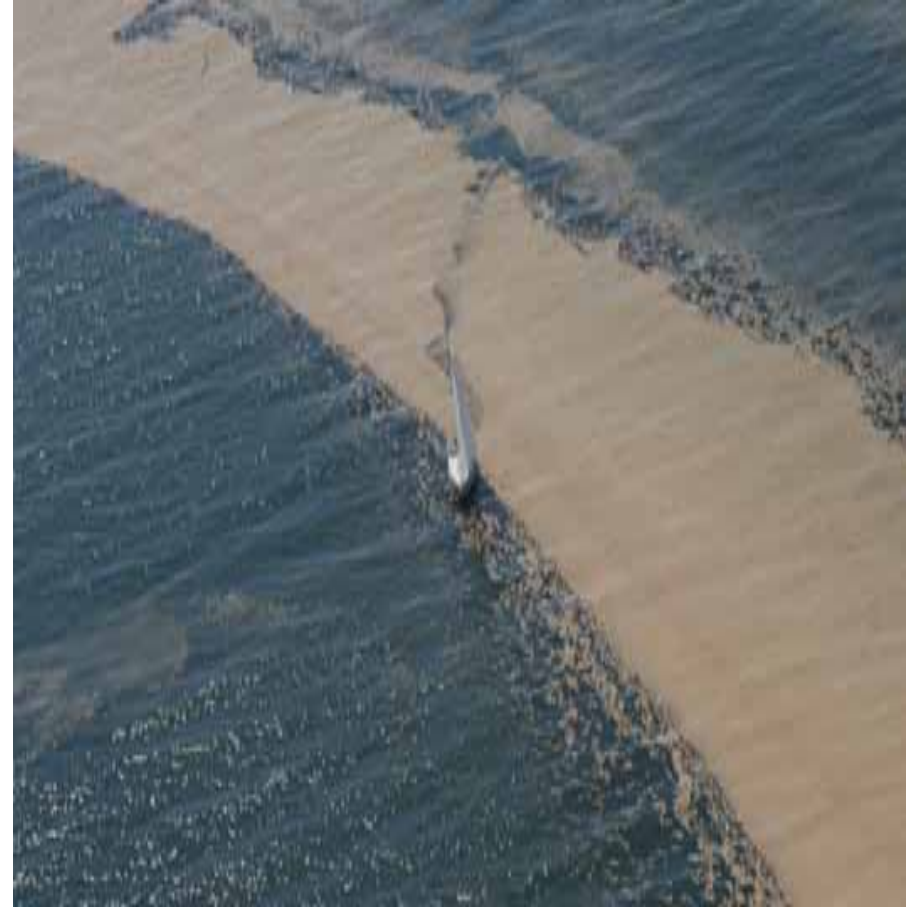
- Increase of N(x8) and P(x4) the last 100 years.
- 40 % of N and 50 of P from agriculture.
- 40% of N from transports and energy sector.
- Poland on top when it comes to total load.
- Sweden, Finland and Denmark if counting/capita.





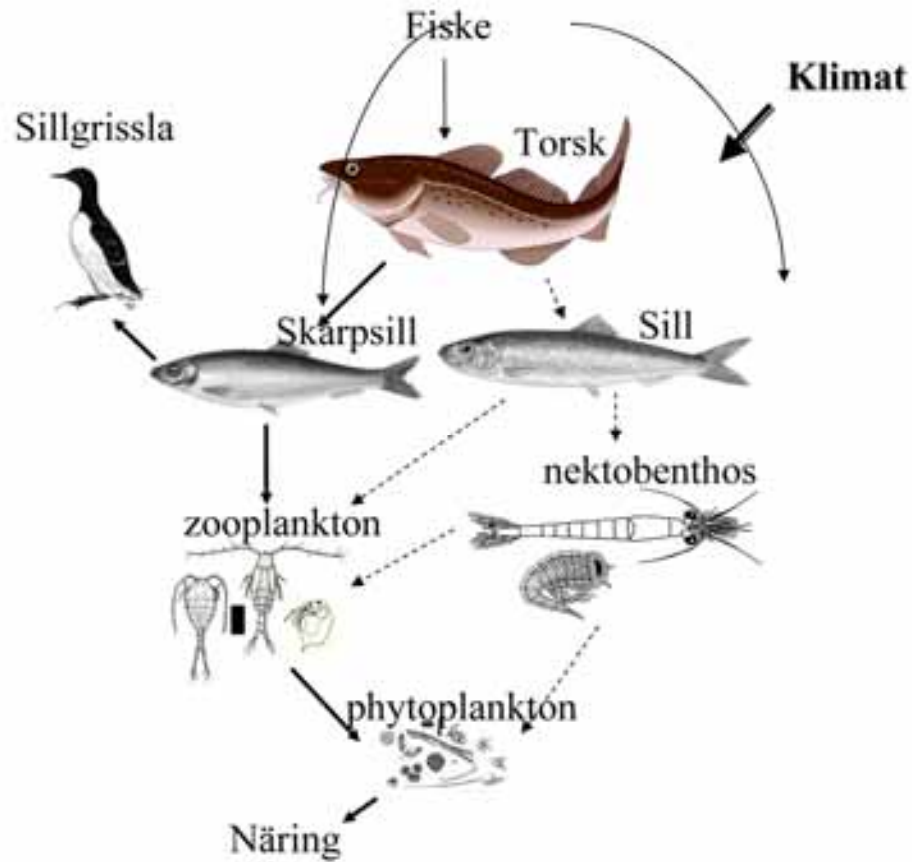
# Effects

- Excess of nutrients.
- High production.
- Algae blooms(cyanobacteria/blue green algae).
- Oxygen free bottoms.
- Change of species composition.
- Shift of the ecosystem





# Food web-linking cod with algae





# Baltic Agriculture-Positions

No subsidies for production with a market/agricultural commodities (cereals,meat,milk,fruit etc).This also includes export subsidies etc.

Continued support for “public money for public goods” ,requested but without a market.”Public payment for public goods” (water protection,biodiversity ,climate.cultural heritage,rural development)





## **Cap spending billions**

**The intention:**

**“Healthy, safe and cheap in a vibrant rural society” later animal welfare and environment**

**The result:**

**Antibiotics, scandals concerning quality, expensive (paid for twice) problems with animal welfare and environment (eutrophication, groundwater, biodiversity), and “dying” rural areas**

**As now 43 % of EUs total budget**

**Never in EU history has any region received so much EU funds –use some billions to set up a Baltic Sea fund (with Russia if possible)**





# Examples proposed

- Legal baseline for environment(PPP)
- Cross compliance for all relevant directives (WFD!)
- Mandatory nutrient balances
- Flat area payment with environmental baseline
- Landscape/freshwater restoration
- EIA for agriculture in sensitive areas
- “Animal factories” should be legally handled as industries
- Regional CAP adoptions due to natural conditions and local problems





# How is it done?

- Campaigning during summer and algal blooms
- Lobby activities (Env, Agri Min) and pressing the Prime ministers to act
- Participating in HELCOM and other Baltic activities
- Field projects (agriculture, wetlands etc ), "green meat projects"
- Partnership with different actors including Farmers federation, single farmers, counties etc





# Reform needed to reduce the agricultural runoff!

